

# Altre Attività

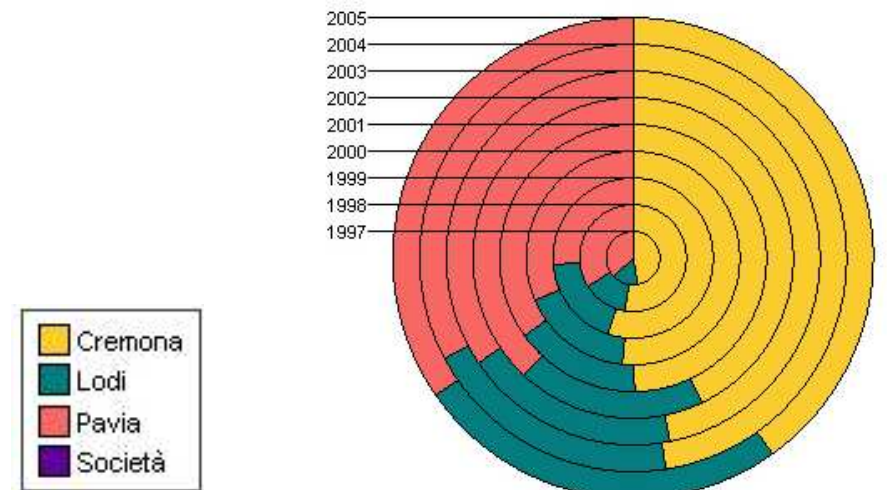
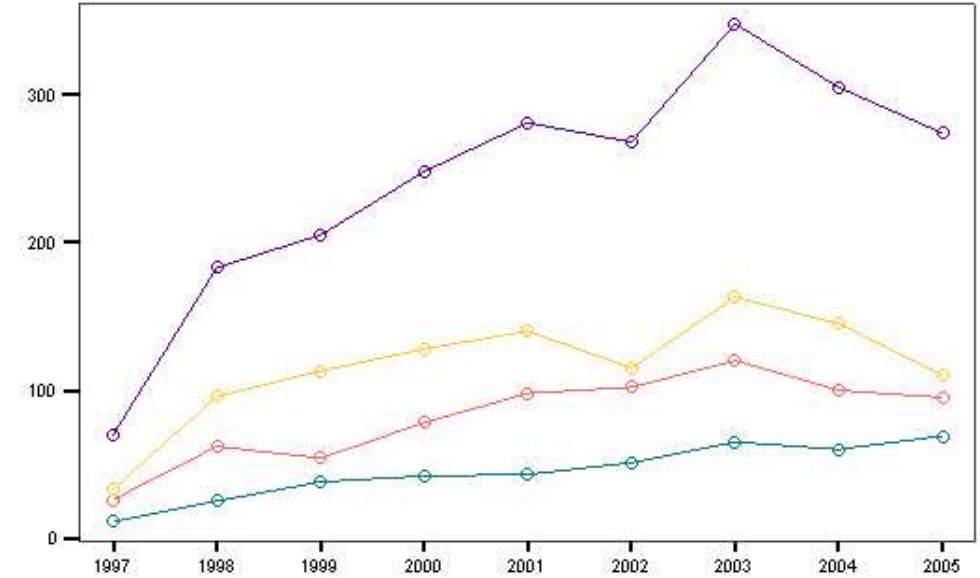
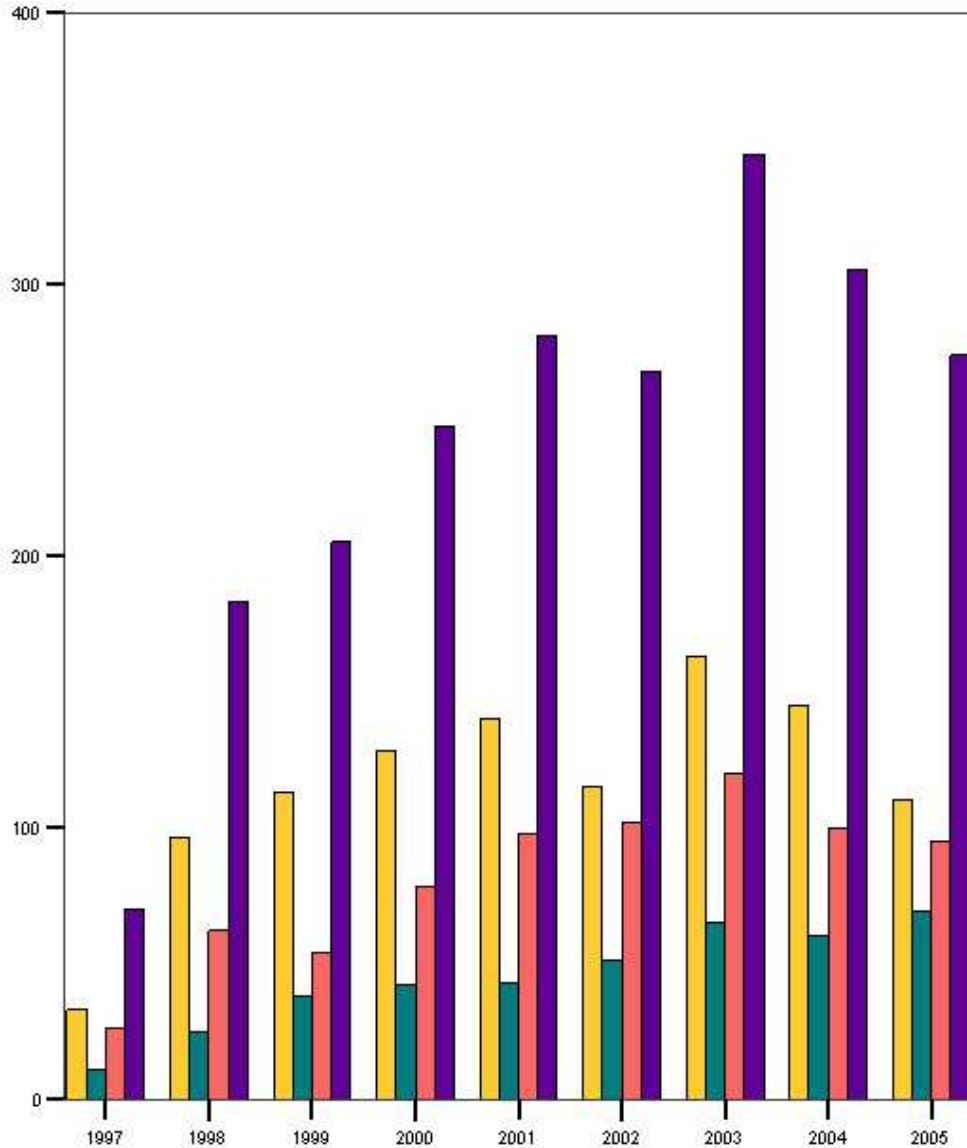
a cura di Lorenzo Caffi, sistemista C.S.F. Pavia

# Servizio Successioni

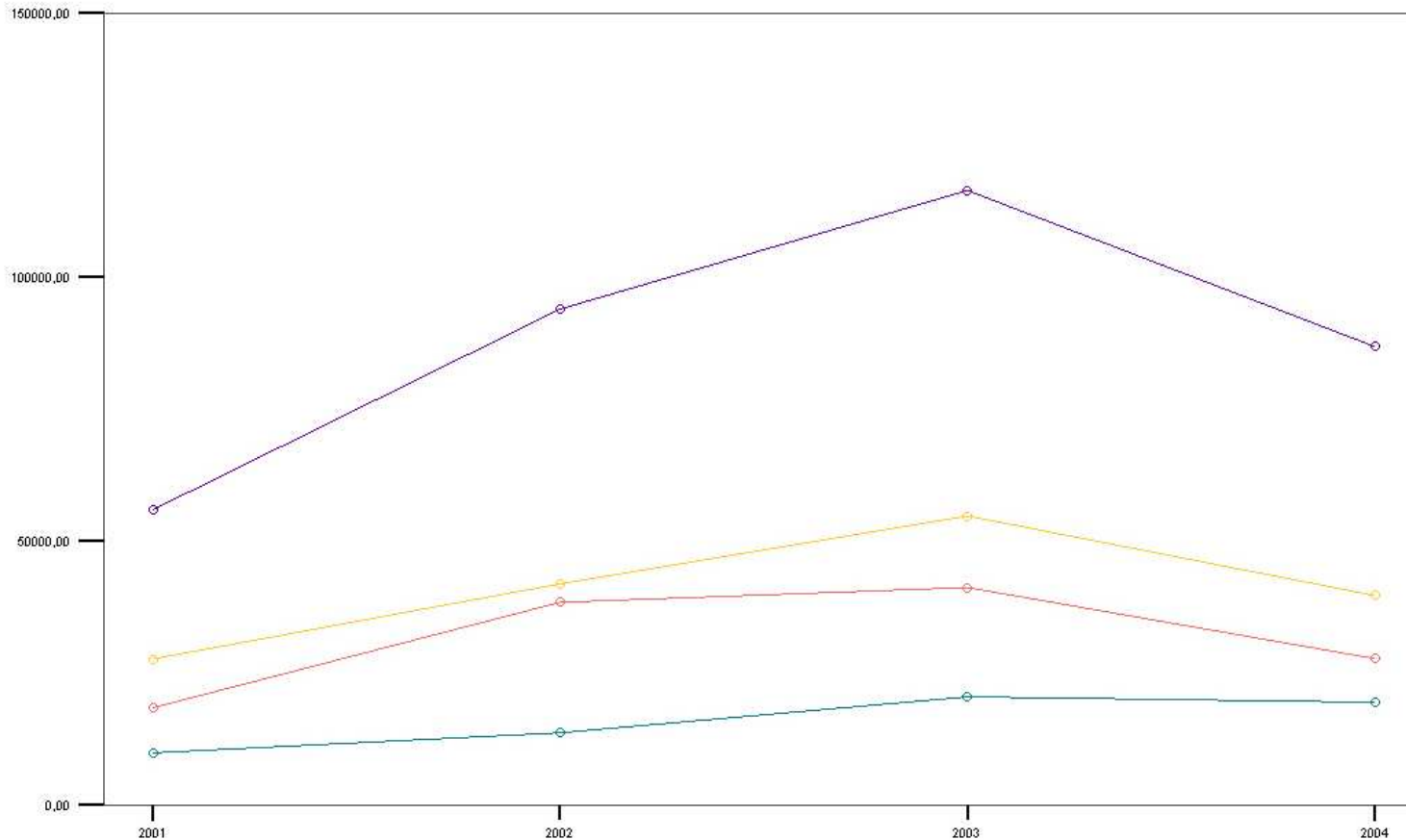
(per il 2005 il dato è al 31/10/2005)

<b>Totale Pratiche</b>	1997	1998	1999	2000	2001	2002	2003	2004	2005
Cremona	33	96	113	128	140	115	163	145	110
Lodi	11	25	38	42	43	51	65	60	69
Pavia	26	62	54	78	98	102	120	100	95
<b>Totale Società</b>	<b>70</b>	<b>183</b>	<b>205</b>	<b>248</b>	<b>281</b>	<b>268</b>	<b>348</b>	<b>305</b>	<b>274</b>

<b>Variazioni percentuali</b>	% '98 su '97	% '99 su '98	% '00 su '99	% '01 su '00	% '02 su '01	% '03 su '02	% '04 su '03	% '05 su '04
Cremona	290,91%	117,71%	113,27%	109,38%	82,14%	141,74%	88,96%	75,86%
Lodi	227,27%	152,00%	110,53%	102,38%	118,60%	127,45%	92,31%	115,00%
Pavia	238,46%	87,10%	144,44%	125,64%	104,08%	117,65%	83,33%	95,00%
<b>Totale Società</b>	<b>261,43%</b>	<b>112,02%</b>	<b>120,98%</b>	<b>113,31%</b>	<b>95,37%</b>	<b>129,85%</b>	<b>87,64%</b>	<b>89,84%</b>

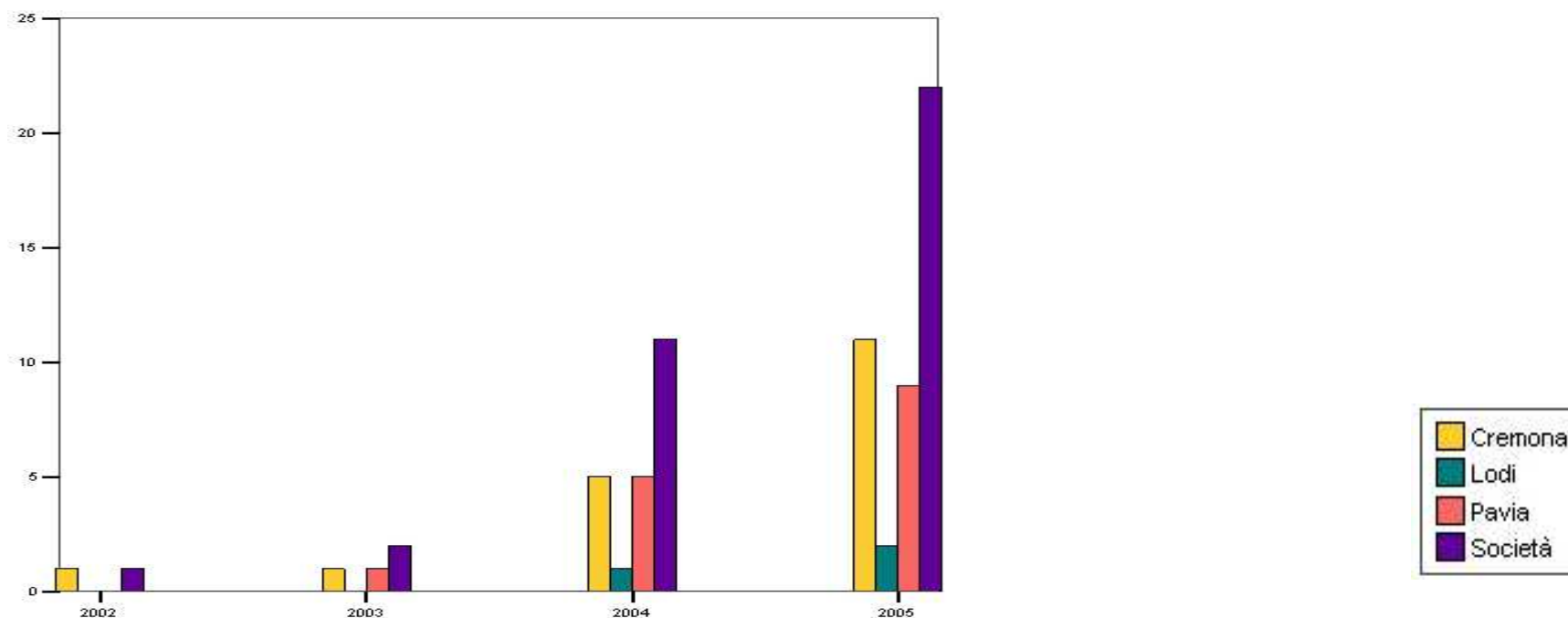


<b>Fatturato Successioni (€)</b>	<b>2001</b>	<b>2002</b>	<b>2003</b>	<b>2004</b>
Cremona	27643,36	41884,43	54737,94	39662,35
Lodi	9864,33	13664,16	20473,57	19446,17
Pavia	18411,69	38377,19	41185,52	27715,39
<b>Totale Società</b>	<b>55919,37</b>	<b>93925,78</b>	<b>116397,03</b>	<b>86823,91</b>



# Servizio Nidil

Gestione contabilità	2002	2003	2004	2005
Cremona	1	1	5	11
Lodi	0	0	1	2
Pavia	0	1	5	9
<b>Totale Società</b>	<b>1</b>	<b>2</b>	<b>11</b>	<b>22</b>



# Contenzioso Fiscale

Fatture Emesse	2001	2002	2003	2004	2005
Cremona	121	33	33	11	6
Lodi	5	7	9	4	18
Pavia	1	0	0	4	0
<b>Totale Società</b>	<b>127</b>	<b>40</b>	<b>42</b>	<b>19</b>	<b>24</b>

